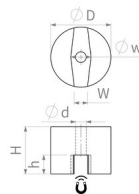


## Raw magnets of Aluminum-nickel-cobalt (AlNiCo)

### Horseshoe magnet made of AlNiCo, cylindrical form, with cylindrical bore



Article number	Quality	D mm	d mm	H mm	h mm	w	W mm	Surface	Adhesive force* N	Weight g	Temperature °C
RM012ACSo88r-00	ANC5	13	4,5	9,7	5	7	4.5	red	7	9	180
RM012ACSo88rh00	ANC5	13	4,5	9,7	5	7	4.5	raw	7	9	450
RM019ACSo88r-00	ANC5	19.1	4,8	12,7	6.5	8.7	5.6	red	18	25	180
RM019ACSo88rh00	ANC5	19.1	4,8	12,7	6.5	8.7	5.6	raw	18	25	450
RM025ACSo88r-00	ANC5	25.4	4,5	20	8	8.5	5.6	red	40	72	180
RM025ACSo88rh00	ANC5	25.4	4,5	20	8	8.5	5.6	raw	40	72	450
RM031ACSo88r-00	ANC5	31.8	7,5	25,4	12.7	12.7	8	red	66	132	180
RM031ACSo88rh00	ANC5	31.8	7,5	25,4	12.7	12.7	8	raw	66	132	450

#### PRODUCT INFORMATION:

For the production of AlNiCo magnets, moulds are often required. Therefore, not every desired dimension can be realised. Simple forms and small quantities can be cut from blocks or bars. If the surface is painted, the maximum operating temperature corresponds to the temperature resistance of the paint.

As an alternative to our standard product we offer:

- » customised dimensions
- » customised forms
- » further qualities
- » other colours

\* The forces have been determined at room temperature on a polished plate made of steel (S235JR according to DIN 10 025) with a thickness of 10 mm (1kg~10N). A deviation of up to -10% from the specified value is possible in exceptional cases. In general, the value is exceeded. The type of application (installation situation, temperatures, counter anchors, etc.) sometimes influence the forces enormously. The values given are for orientation purposes. Let our experts advise you.